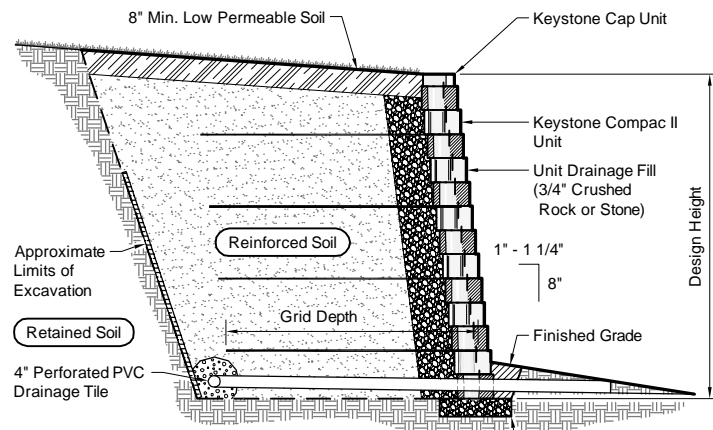


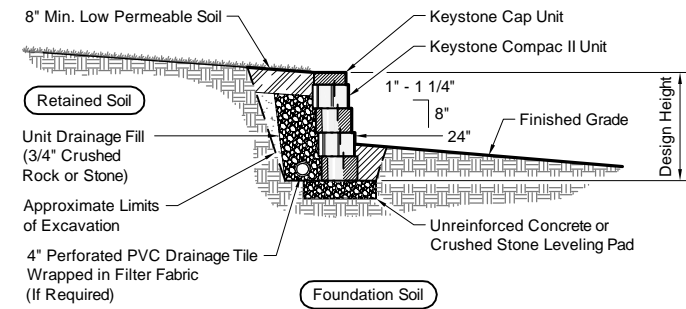
Note:
When site conditions require, wrap drainage tile in 3/4\"/>

Typical Reinforced Wall Section
Compac II Unit - Near Vertical Setback



Note:
When site conditions require, wrap drainage tile in 3/4\"/>

Typical Reinforced Wall Section
Compac II Unit - 1\"/>

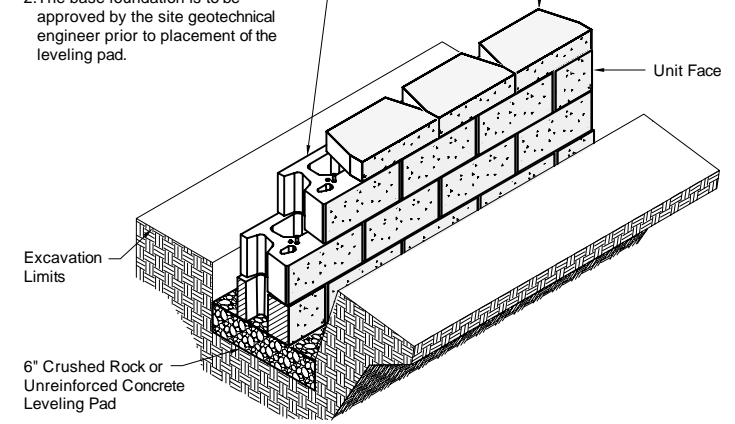


Typical Gravity Wall Section
Compac II Unit - 1\"/>

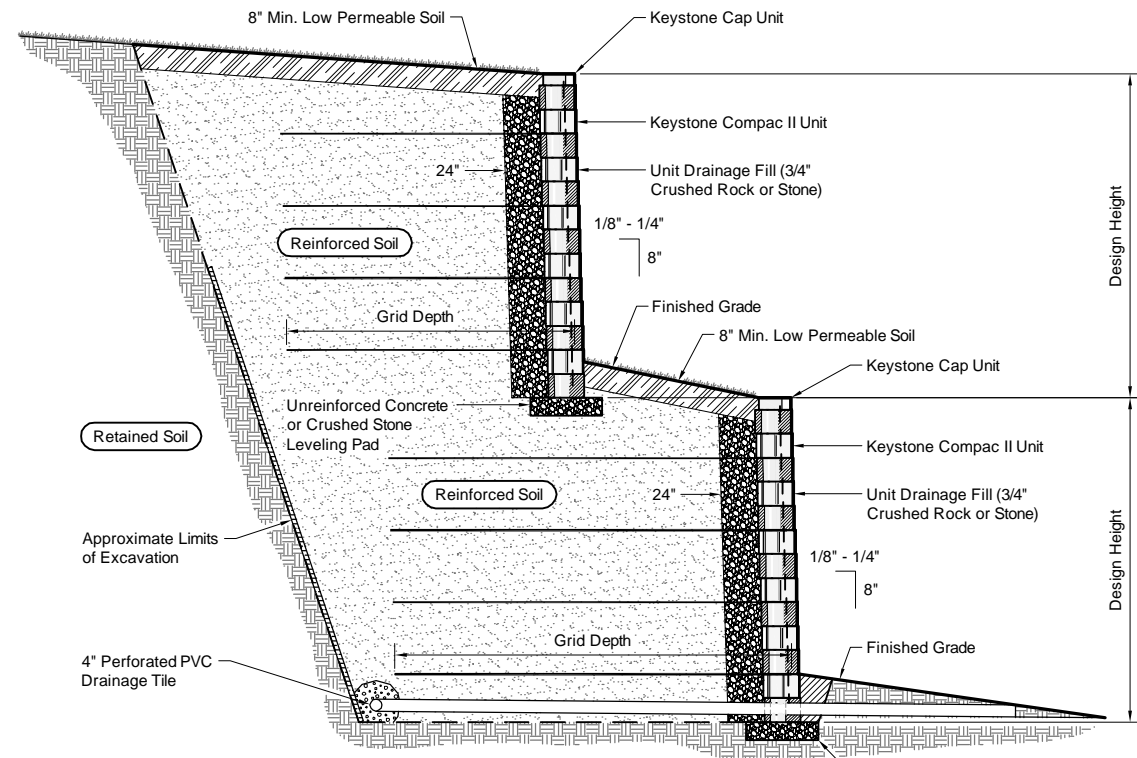
Base Leveling Pad Notes:

- The leveling pad is to be constructed of crushed stone or 2,000 psi ± unreinforced concrete
- The base foundation is to be approved by the site geotechnical engineer prior to placement of the leveling pad.

Compac II Unit		Cap Unit	
Width:	18"	Width:	18"
*Depth:	12"	*Depth:	10 1/2"
Height:	8"	Height:	4"
*Weight:	90 lbs	*Weight:	50 lbs

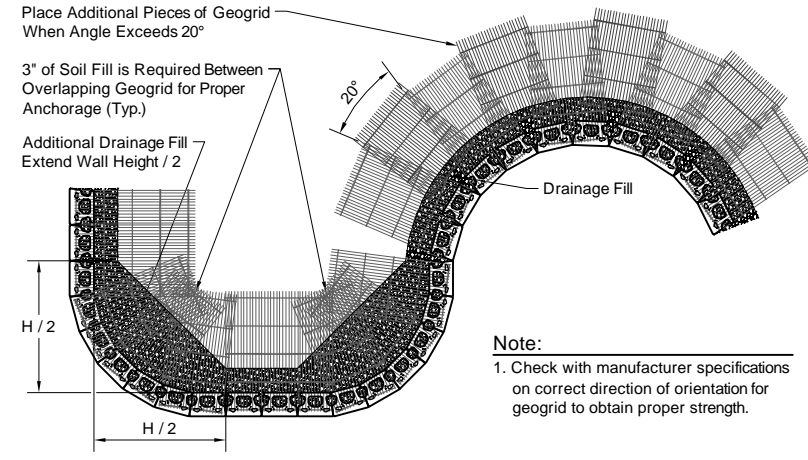


Compac II Unit/Base Pad Isometric Section View
*Dimensions & Weight May Vary by Region



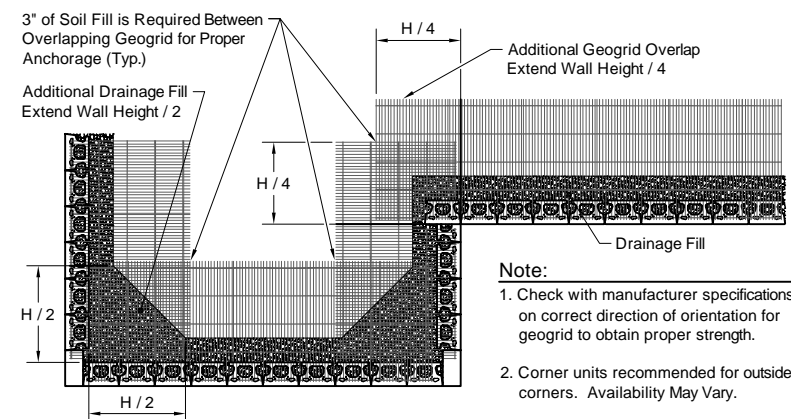
Note:
When site conditions require, wrap drainage tile in 3/4\"/>

Typical Reinforced Tiered Wall Section
Compac II Unit - Near Vertical Setback



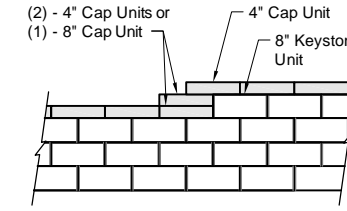
Note:
1. Check with manufacturer specifications on correct direction of orientation for geogrid to obtain proper strength.

Geogrid Installation on Curves



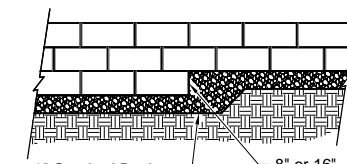
Note:
1. Check with manufacturer specifications on correct direction of orientation for geogrid to obtain proper strength.
2. Corner units recommended for outside corners. Availability May Vary.

Geogrid Installation at Corners

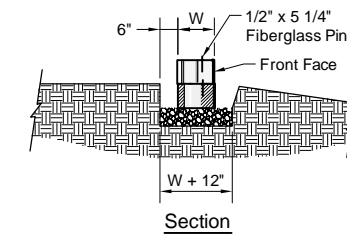


Note:
1. Secure all cap units with Keystone Kapseal or equal.

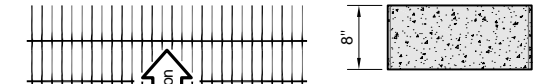
Top of Wall Steps



Note:
1. The leveling pad is to be constructed of crushed stone or 2000 psi ± unreinforced concrete.



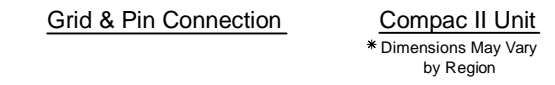
Leveling Pad Detail



Compac II Elevation

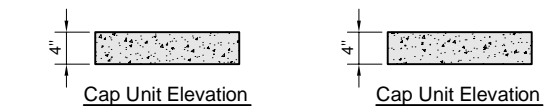


Compac II Plan

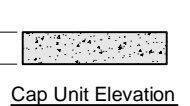


Grid & Pin Connection

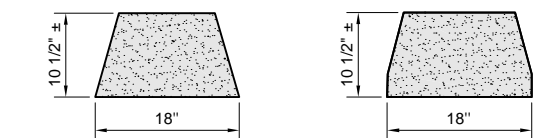
Compac II Unit
*Dimensions May Vary by Region



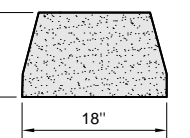
Cap Unit Elevation



Cap Unit Elevation



Cap Unit Plan



Cap Unit Plan



Universal Cap Unit Option
*Dimensions & Availability Will Vary by Region

Straight Split Cap Unit Option
*Dimensions & Availability Will Vary by Region

Copyright 2003 Keystone Retaining Wall Systems

Design is for internal stability of the KEYSTONE wall structure only. External stability, including but not limited to foundation and slope stability is the responsibility of the Owner. The design is based on the assumption that the materials within the retained mass, methods of construction, and quality of materials conform to KEYSTONE's specification for this project.

This drawing is being furnished for this specific project only. Any party accepting this document does so in confidence and agrees that it shall not be duplicated in whole or in part, nor disclosed to others without the consent of Keystone Retaining Wall Systems, Inc.

No.	Date	Revision	By



Designed By: RKM	Title: Compac II Unit - Straight Face Details	Date:
Checked By: CDM	Project: Keystone Retaining Wall Systems Typical Wall Details	Project No:
Scale: No Scale		Drawing No: